

The background of the entire page is a photograph of industrial machinery, likely part of a packaging line. It features various metal components, including a large blue cylindrical part and several brass-colored rectangular blocks. A semi-transparent blue horizontal band is overlaid across the middle of the image, containing the main title text.

GLUING AND QUALITY INSPECTION SOLUTIONS FOR THE **PACKAGING INDUSTRY**



VALCO MELTON

Adhesive Dispensing & Quality Assurance Systems

ADVANCE INTO ALL-ELECTRIC WITH

ecostitch

VALCO MELTON

All electric hot melt dispensing systems have been the driving force behind reshaping the packaging industry. Join some of the world's leading packagers already benefitting from EcoStitch™ and let the experts at Valco Melton take your production line to an unparalleled level of efficiency.

ecostitch BENEFITS

VALCO MELTON

1.

More uptime. Improve the efficiency of your packaging process by increasing your production uptime.

2.

No plugging. Eliminate nozzle plugging by working at lower pressures with larger nozzle orifices and glue filtration in the gun body.

3.

Reduce adhesive consumption from 35 to 50%.

4.

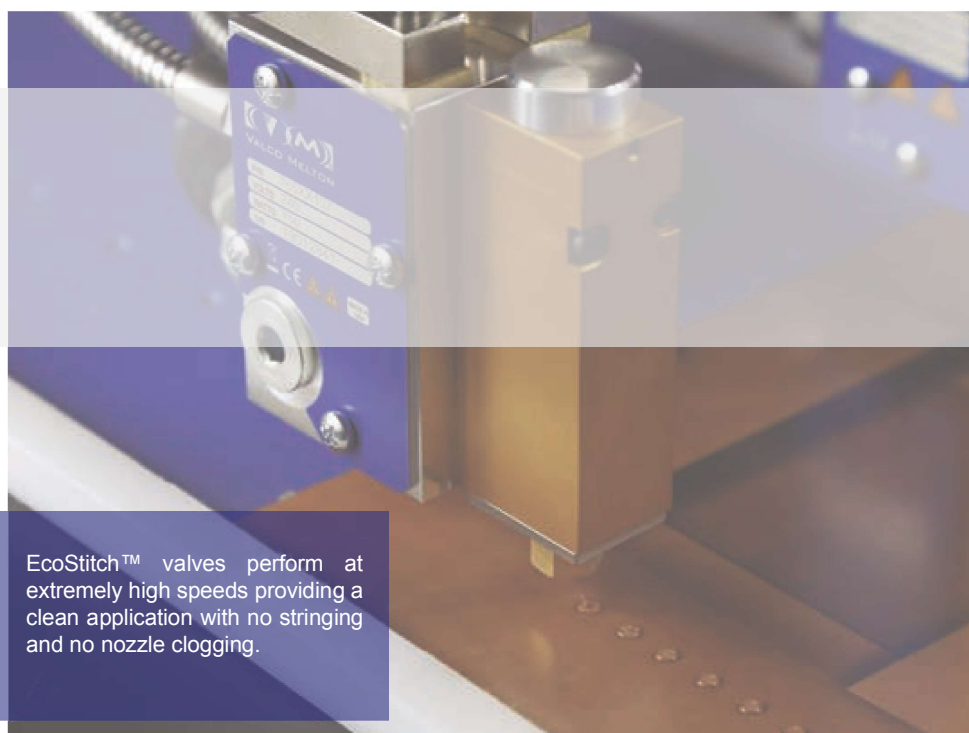
No consumable parts. Elimination of compressed air removes moving parts, dynamic seals and frequent parts changes.

With over 2 billion cycle capability and fewer moving parts virtually eliminating the chances of failure, the spare parts stock is reduced to a minimum, resulting in lower investment, storage costs and downtime associated with the replacement of parts. In addition, the reduction in adhesive usage brings additional savings that guarantee payback in as little as 4 months.

ecostitch
VALCO MELTON
IN ACTION

No size limitations. Achieve the smallest dot size by setting the valve into stitch mode through the valve driver.

EcoStitch™ valves perform at extremely high speeds providing a clean application with no stringing and no nozzle clogging.



ALL ELECTRIC GLUE MELTERS

The new EcoStitch series melters are the most intelligent, versatile, technologically advanced and most innovative adhesive melter to ever be created. Ethernet IP integration, digital pressure control, adhesive usage data available on screen and full OEM integration with all digital based data.



EcoStitch provides better bond strength and fiber tear compared to a standard glue bead pattern.



The round dots compress and burn deep into the fibers giving the bond significant fiber penetration and surface area for bonding.



DIFFERENT CONFIGURATIONS

The EcoStitch guns are available in nearly any configuration required by your packaging application



MODULE
MXM



V WING
MXM



DUAL MODULE
MXM



MXM2LP

VD2 DRIVERS

The VD2 drivers integrate into any existing machine and provide the EcoStitch dot and gap control to regulate adhesive usage. Each valve can be individually programmed for a specific dot size and gap offering unparalleled flexibility to achieve maximum adhesive savings while maintaining best bond quality.

VD2



VD2e



VD2p



KUBE SERIES

A new generation of energy-efficient melters optimizes the heating process and improves insulation, minimizing energy lost to the environment. Different sizes and melting capacities provide the best configuration for each manufacturing process.

Easy access to electrical cabinet and mechanical components for maintenance tasks.

All units may incorporate a fully integrated, automatic adhesive feeding system. This prevents charring and optimizes the time the adhesive stays in the tank.

Automatic pressure relief system to avoid risks when handling the equipment during maintenance tasks.

Up to 8 outputs.

Fully compatible with our previous equipment and other market standards to allow easy replacements.

Ethernet communication kit option with main machine.

Low pressure pump available for processes with low adhesive grammage requirements.

I/O signals included as standard.

Option to include the **VM Connect** card and connection through KubeCloud for Valco Melton to monitor the correct operation of the system by measuring various key parameters. This allows us to act proactively in providing the right maintenance, eliminating unprogrammed downtimes.

FLEXFLOW CONTROL

Monitors adhesive consumption. It records the total adhesive consumption to avoid deviations and optimize the amount of adhesive needed per product.



KUBE ZERO SYSTEM

MELT ON DEMAND MELTERS



Designed to allow customers to use the same unit for all their packaging needs, the Kube helps improve system operation by removing degradation problems, as well as minimizes the maintenance and downtime associated with gluing systems.

Melt on demand. Promote adhesive stability and reduce char by only melting adhesive as you need it.

Mount anywhere. Engineered to operate with three different install configurations, the Kube is suitable for both new machine installations, as well as system upgrades/replacements.



Simple conversion. Fully compatible with other industry standard equipment, the Kube retrofits your packaging line without additional investment in hoses, guns or spare parts.

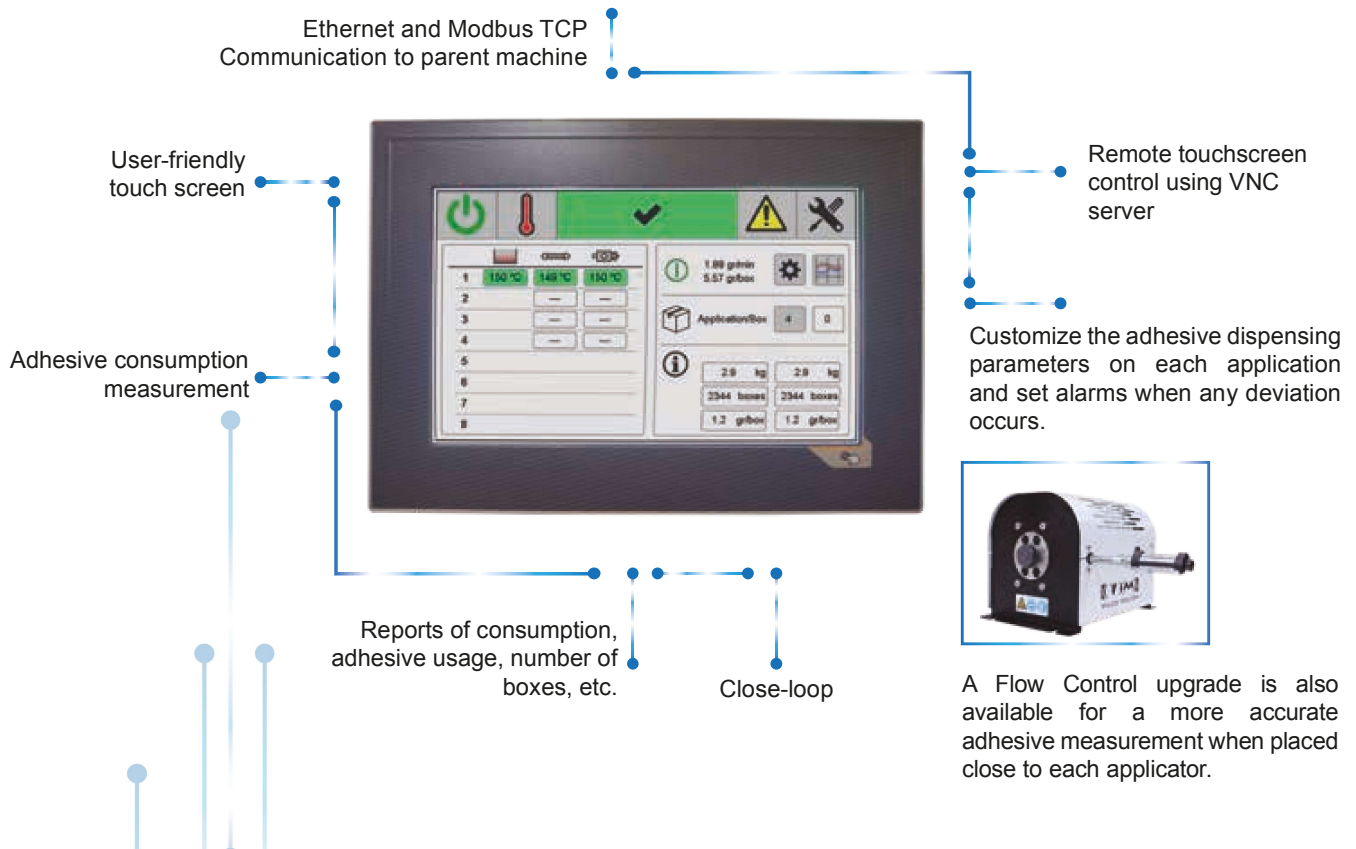
Operator free. Enclosed system with integrated auto feed keeps out dirt and debris, and promotes a safer work environment. Also includes manual fill option.

Zero maintenance. Strategically designed to automatically feed adhesive, contaminants are left out, eliminating any chance of plugged nozzles.

MORE THAN A MELT UNIT

PRO SOLUTION

Designed to integrate all digital characteristics of the heating, on/off, I/O's, pump engage, pump speeds, pump pressure and other various alarm and melter setpoints into your parent machine HMI.



COMPLETE THE PACKAGE

Increase your production capabilities and product success with Valco Melton's comprehensive range of hot melt glue guns, designed to satisfy all application requirements in the packaging industry.

HOT MELT APPLICATORS

ECOSTITCH

All-Electric
Valves



MK-F

Insulated
Double Effect
Applicators



ME

Double Effect
(AO/AC)
Applicators



MS

Modular Guns
for standard
applications



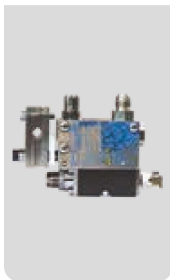
MZ

Spray Guns with
Air Heater



MF

Internal
Integrated Filter



LP

Low Profile
Applicators



PATTERN CONTROLLERS

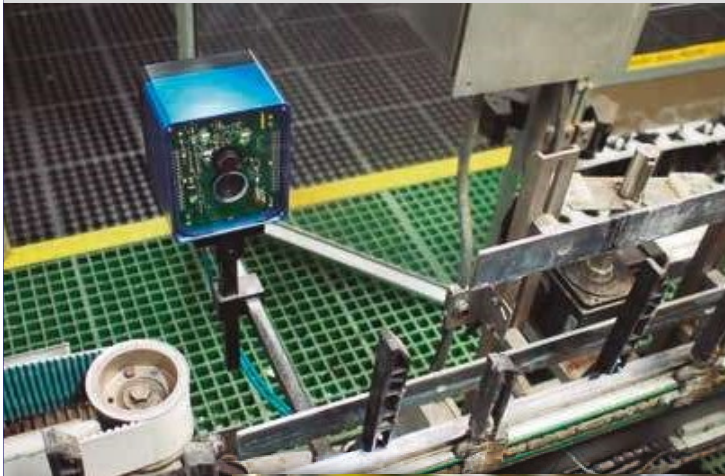
For the most advanced precision gluing experience, a complete line of pattern controls are available as both an external accessory to the packaging line or as an integrated feature of the EC Series Unit.



HOT MELT INSPECTION

PACKCHEK

The PackChek System is the latest innovation in hot melt inspection for end-of-line packaging. Utilizing both thermal and visual imaging, PackChek inspects the heat signature of the package to ensure hot melt glue has been applied to the correct locations.



PackChek can be installed at the discharge of your machine, without space constraints.

Tolerance levels allow every pattern to be designated as 'good', 'marginal', or 'bad'. Marginal products can set off a warning, alerting operators to adjust the glue pattern or fix an issue in real-time, without shutting down the machine.

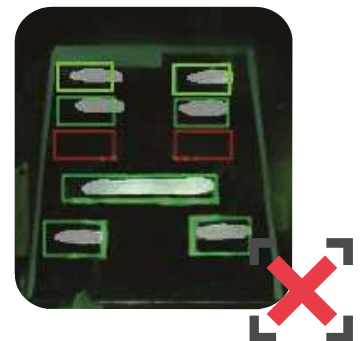
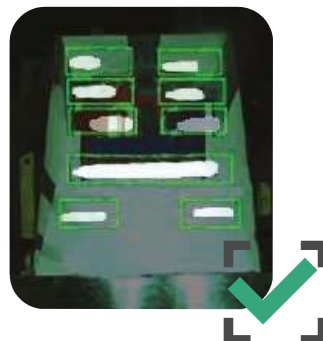


PackChek can be programmed for any number of cases and any number of glue patterns. Multi-packers that convert to various size / count packs may require the camera to be moved in or out, if mounted on the discharge conveyor.

How are defects defined by the system?

Defects are defined by predetermined tolerance levels and "glue windows," which are configured by the user. Settings for tolerance levels include:

- Missing glue beads
- Weak glue beads
- Crushed, torn or open flaps
- Misaligned glue beads



World Headquarters

USA, OH, Cincinnati | Tel: +1.513.874.6550
info@valcomelton.com

America Manufacturing, Sales & Service Centers

Canada, Vancouver, B.C.
ClearVision Technologies
Tel: +1.604.998.4012
canada@valcomelton.com

USA West Coast, CA, Petaluma
GMS-Vansco
Tel: +1.707.285.3392
inquiry@gmsvansco.com

Mexico, México D.F.
Tel: +52.55.6278.1727
mexico@valcomelton.com

Colombia, Bogotá
Tel: +57.313.421.0926
colombia@valcomelton.com

Brazil, Sao Paulo
Tel: +55.11.3071.2117
brazil@valcomelton.com

Europe Manufacturing, Sales & Service Centers

Spain, Navarra, Orkoien | Tel: +34 948 321 580
spain@valcomelton.com

France, Valence | Tel: +33 (0) 4 75 78 13 73
france@valcomelton.com

Italy, Brescia | Tel: +39 030 2732544
italy@valcomelton.com

Italy, Brescia | **ERO s.l.r** | Tel: +39 030 2731503
info@ero-gluers.com

Benelux, The Netherlands | Tel: +31 252-673673
benelux@valcomelton.com

Hungary, Budapest | Tel: +36 1-214-4705
hungary@valcomelton.com

UK, England, Telford | Tel: +44 1952-677911
uk@valcomelton.com

Germany, Düsseldorf | Tel: +49.211 984 798-0
germany@valcomelton.com

Poland, Dlugoleka | Tel: +48 71 889 04 50
poland@valcomelton.com

Czech Republic, Prague
czech@valcomelton.com

Direct Sales Centers ●
Distributors Worldwide ●

South, Southeast, West & Central Asia Manufacturing, Sales & Service Centers

Turkey, Istanbul | Tel: +90 212 327 99 71
turkey@valcomelton.com

India, Bangalore | Tel: +91.80.46553300
india@valcomelton.com

UAE, Sharjah | Tel: +971.521305960
uae@valcomelton.com

Singapore, Singapore | Tel: +65 850 95355
singapore@valcomelton.com

East Asia Sales & Service Centers

China, Shanghai | china@valcomelton.com
China, Xiamen | Tel: +86.592.591.7854
Fax: +86.592.591.7834 | china@valcomelton.com

To find the office
nearest you, visit:
<http://bit.ly/2Cb8Fv2>
or snap a picture of
this QR Code

