

THE 540EC SERIES VALVES ARE SOLENOID OPERATED FOR PRECISE GLUE PATTERNS AT HIGH MACHINE SPEEDS. THE RETAINING NUT ALLOWS FOR THE MOUNTING OF DIFFERENT SIZE NOZZLES. THE VALVE FEATURES A CERAMIC TIPPED PLUNGER ASSEMBLY AND NO DYNAMIC SEALS FOR LONG LIFE. THE 540EC CAN ALSO BE CONVERTED TO A 540BR FOR CONTACT APPLICATIONS. THE 540ECR VERSION OFFERS AN ADJUSTABLE STROKE FOR MORE FLEXIBLE PATTERN CONTROL

#### APPLICATIONS

SPECIALTY FOLDER GLUERS, CORRUGATED

#### TECHNICAL DATA

COIL RESISTANCE - 5.3 OHMS  
VALVE WIDTH - 25mm (.984in)  
VALVE HEIGHT (ECR) - 127.33mm (5.013in)  
VALVE HEIGHT (BRT) - 115.07mm (4.530in)  
MAX FLUID PRESURE - 400psi  
VISCOSITY RANGE - 300 - 2500 cps  
HOLD VOLTAGE - 6 VDC

#### VALVE ASSEMBLIES

540ECT VALVE (VITON) - 707XX466  
540ECR VALVE (VITON) - 707XX469  
540ECT VALVE (EP) - 707XX650  
540ECR VALVE (EP) - 707XX652

#### BRACKET

540 EC SERIES VALVE BRACKET - 579XX421

#### MAINTENANCE KITS

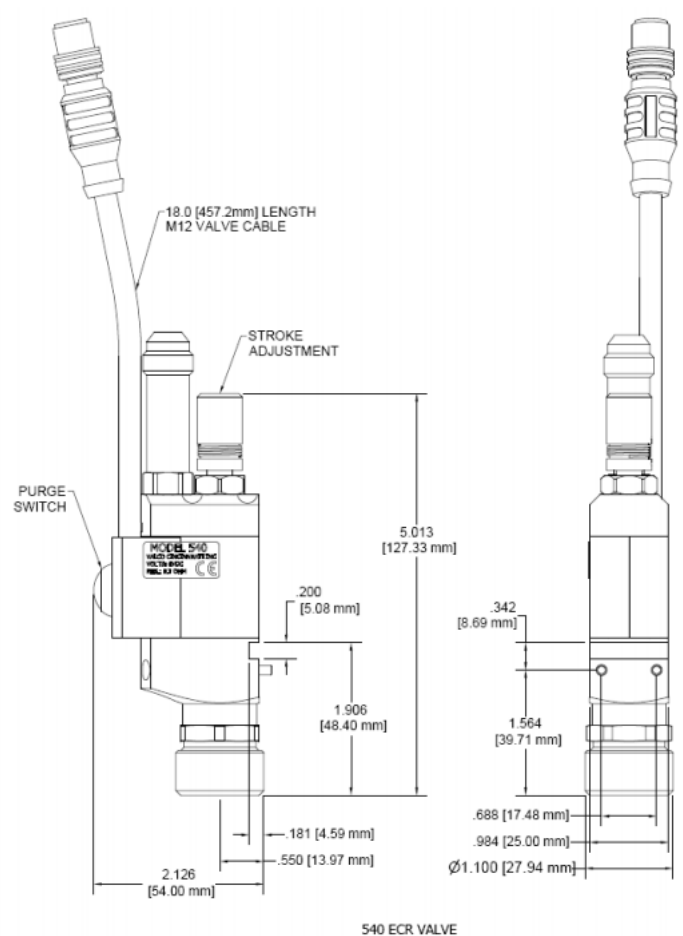
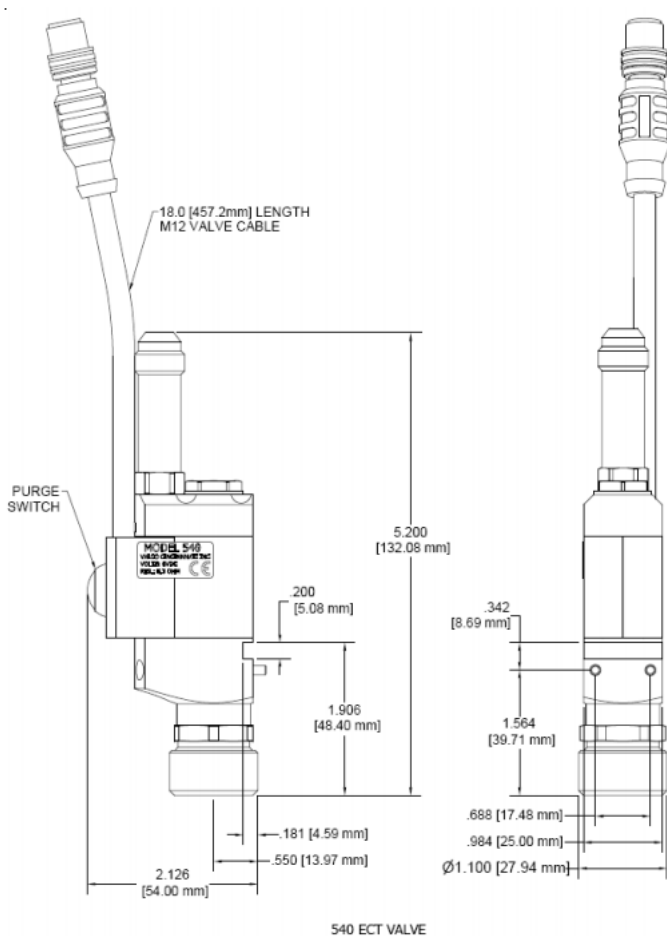
MAINTENANCE KIT (VITON) - 707XX447  
MAINTENANCE KIT (EP) - 707XX631

MAINTENANCE KITS INCLUDE:  
LITHIUM GREASE  
FLUSHING ADAPTER  
NOZZLE CLEANING DRILLS  
CLEANING BRUSH  
PLUNGER ASSEMBLY  
SEAT ASSEMBLY  
O-RINGS  
SPRING

#### REPAIR KITS

REPAIR KIT (VITON) - 712XX012  
REPAIR KIT (EP) - 712XX013

REPAIR KITS INCLUDE:  
O-RINGS  
SPRING  
MOUNTING SCREWS



# 540 ECR/ECT Valve

DS088

# NOZZLE - MULTI-ORIFICE

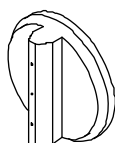
707XX881	NOZZLE, NON-CONTACT, TWO .016 IN (0.4mm) VEINS ON 1/4 IN (6.5mm) CENTERS
707XX882	NOZZLE, NON-CONTACT, TWO .020 IN (0.5mm) VEINS ON 1/4 IN (6.5mm) CENTERS
707XX883	NOZZLE, NON-CONTACT, TWO .024 IN (0.6mm) VEINS ON 1/4 IN (6.5mm) CENTERS
707XX884	NOZZLE, NON-CONTACT, TWO .031 IN (0.8mm) VEINS ON 1/4 IN (6.5mm) CENTERS
707XX885	NOZZLE, NON-CONTACT, THREE .016 IN (0.4mm) VEINS ON 1/4 IN (6.5mm) CENTERS
707XX886	NOZZLE, NON-CONTACT, THREE .020 IN (0.5mm) VEINS ON 1/4 IN (6.5mm) CENTERS
707XX887	NOZZLE, NON-CONTACT, THREE .024 IN (0.6mm) VEINS ON 1/4 IN (6.5mm) CENTERS
707XX888	NOZZLE, NON-CONTACT, THREE .031 IN (0.8mm) VEINS ON 1/4 IN (6.5mm) CENTERS
707XX889	NOZZLE, NON-CONTACT, FOUR .020 IN (0.5mm) VEINS ON 1/4 IN (6.5mm) CENTERS
707XX890	NOZZLE, NON-CONTACT, FOUR .024 IN (0.6mm) VEINS ON 1/4 IN (6.5mm) CENTERS
707XX891	NOZZLE, NON-CONTACT, FOUR .031 IN (0.8mm) VEINS ON 1/4 IN (6.5mm) CENTERS
707XX892	NOZZLE, NON-CONTACT, FIVE .024 IN (0.6mm) VEINS ON 1/8 IN (3.2mm) CENTERS
707XX893	NOZZLE, NON-CONTACT, SEVEN .024 IN (0.6mm) VEINS ON 1/8 IN (3.2mm) CENTERS
712XX007	NOZZLE, CONTACT, TWO .039 IN (1.0mm) VEINS ON 1/4 IN (6.5mm) CENTERS
712XX008	NOZZLE, CONTACT, THREE .039 IN (1.0mm) VEINS ON 1/4 IN (6.5mm) CENTERS
712XX009	NOZZLE, CONTACT, FOUR .039 IN (1.0mm) VEINS ON 0.236 IN (6.0mm) CENTERS

# NOZZLE - SINGLE-ORIFICE

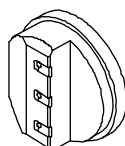
707XX489	NOZZLE, NON-CONTACT, .012 IN (0.3mm) VEIN
707XX488	NOZZLE, NON-CONTACT, .016 IN (0.4mm) VEIN
707XX487	NOZZLE, NON-CONTACT, .020 IN (0.5mm) VEIN
707XX486	NOZZLE, NON-CONTACT, .024 IN (0.6mm) VEIN
707XX485	NOZZLE, NON-CONTACT, .028 IN (0.7mm) VEIN
712XX006	NOZZLE, CONTACT, .039 IN (1.0mm) VEIN

# 540 ECR/ECT

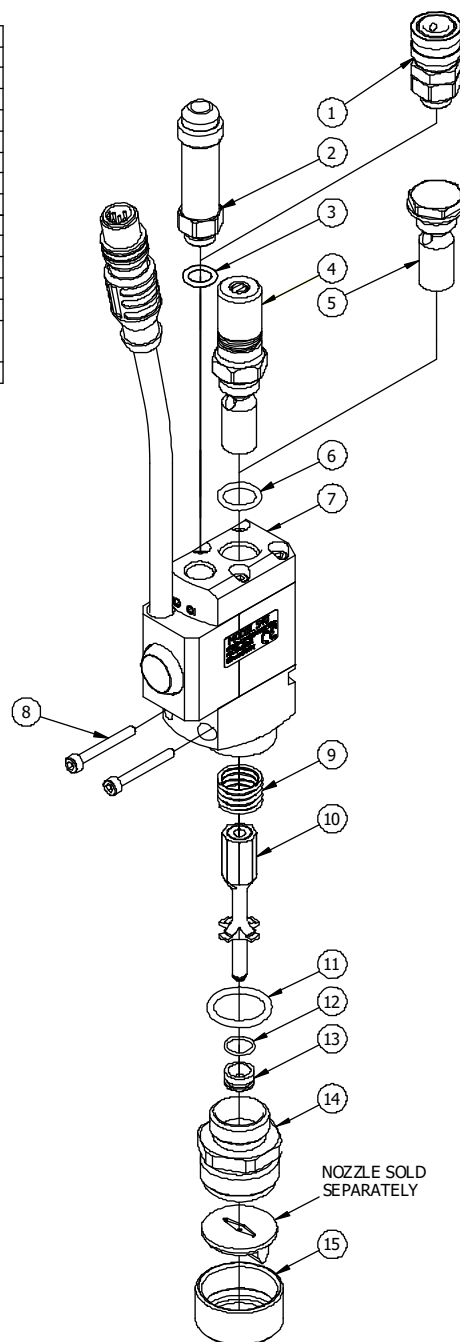
		VITON	EP
1	FITTING - SWIVEL	799XX658	707XX607
2	JIC CONNECTOR	707XX504	707XX615
3	O-RING (INCLUDED W/ ITEMS 1 & 2)	745XX339	746XX119
4	ADJUSTABLE BACKSTOP	707XX472	707XX608
5	NON-ADJUSTABLE BACKSTOP	712XX014	712XX015
6	O-RING (INCLUDED W/ ITEMS 4 & 5)	745XX340	746XX089
7	VALVE SUB ASSEMBLY	707XX477	707XX477
8	SHCS M8 X 25 SS	798XX049	798XX049
9	SPRING	783XX042	783XX042
10	PLUNGER ASSEMBLY	707XX482	707XX482
11	O-RING (INCLUDED W/ ITEM 14)	745XX007	746XX170
12	O-RING (INCLUDED W/ ITEM 14)	746XX069	746XX069
13	SEAT ASSEMBLY	707XX462	707XX462
14	ADAPTER ASSEMBLY (INCLUDES ITEMS 11, 12, 13 & 15)	707XX461	707XX612
15	RETAINING NUT	707XX445	707XX445



540 ECR/ECT NON-CONTACT NOZZLE



540 ECR/ECT CONTACT NOZZLE





## 540BR & 540EC CONTACT/NON-CONTACT VALVES

### 540EC Valve - Nozzle Options

540EC Valve - Nozzle Options		
	PN	DESCRIPTION TITLE
 707xx489		Single Vein Non-Contact Nozzles
	707xx489	Nozzle, 0.012 (.3mm)
	707xx488	Nozzle, 0.016 (.4mm)
	707xx487	Nozzle, 0.020 (.5mm)
	707xx486	Nozzle, 0.024 (.6mm)
	707xx485	Nozzle, 0.028 (.7mm)
 707xx458   707xx455   707xx497		Multi-Vein Non-Contact Nozzles
	707xx881	Nozzle, 2 vein .015(0.4mm), .250 spacing
	707xx882	Nozzle, 2 vein .020(0.5mm), .250 spacing
	707xx883	Nozzle, 2 vein .024(0.6mm), .250 spacing
	707xx884	Nozzle, 2 vein .031(0.8mm), .250 spacing
	707xx885	Nozzle, 3 vein .015(0.4mm), .250 spacing
	707xx886	Nozzle, 3 vein .020(0.5mm), .250 spacing
	707xx887	Nozzle, 3 vein .024(0.6mm), .250 spacing
	707xx888	Nozzle, 3 vein .031(0.8mm), .250 spacing
	707xx889	Nozzle, 4 vein .020(0.5mm), .250 spacing
	707xx890	Nozzle, 4 vein .024(0.6mm), .250 spacing
	707xx891	Nozzle, 4 vein .031(0.8mm), .250 spacing
	707xx892	Nozzle, 5 Vein 0.6mm diameter 0.125 centers
	707xx893	Nozzle, 7 Vein 0.6mm diameter 0.125 centers
	707xx449	Old-style nozzle replacement nozzle insert - Bulletin116
		Contact Nozzles
	707xx498	Contact nozzle assy, 0.39 (1mm), single vein
	707xx497	Contact nozzle assy, 0.39 (1mm), 0.25(6.35mm) centers two vein
	707xx496	Contact nozzle assy, 0.39 (1mm) 0.25 (6.35mm) centers three vein
	707xx495	Contact nozzle assy, 0.39 (1mm) 0.236 (6mm) centers 4 vein